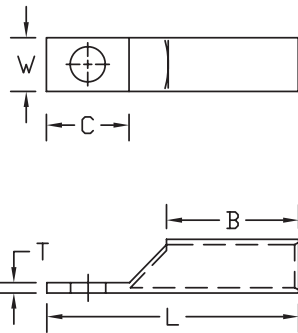


Long Barrel - One Hole Narrow Tongue with Inspection Window

Type BBLZ-S-NT

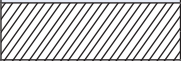

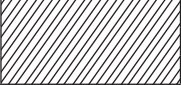

- Manufactured from high conductivity seamless copper tubing
- Tin-plated to inhibit corrosion
- Beveled entry for easy cable insertion
- Inspection window to ensure full cable insertion
- **Narrow tongue design for limited space applications**
- Long barrel provides high pull out force and added secureness for improved mechanical and electrical properties
- Color coded barrels are marked with die index numbers
- Connectors are suitable for voltages up to 35 KV
- 45° and 90° angles are UL listed and CSA certified
- **Connectors are UL listed and CSA certified with Penn-Union, Burndy, T&B, Huskie, Greenlee and Versa-Crimp® style tooling**



BBLZ-S-NT

See table for dimensions and installation tooling information

BBLZ-S-NT DIMENSIONS & INSTALLATION TOOLING INFORMATION

CATALOG NUMBER	COPPER CONDUCTOR SIZE	STUD HOLE SIZE	FIGURE DIMENSIONS (IN.)					INSTALLATION TOOLING				WIRE STRIP LENGTH
			TONGUE WIDTH "W"	TONGUE LENGTH "C"	TONGUE THICKNESS "T"	BARREL LENGTH "B"	OVERALL LENGTH "L"	COLOR CODE	PENN-UNION DIELESS MECHANICAL TOOLS	BURNDY DIE INDEX NO.	PENN-UNION DIE CATALOG NO.	
BBLZ-45S-NT	4 AWG	#10	.40	.69	.11	1.09	2.06	Gray	TDM-250 & TDM-500	8	T-8	1-1/4"
BBLZ-4S-NT		1/4"	.40	.69	.11	1.09	2.06					
BBLZ-259-NT	2 AWG	#10	.50	.75	.13	1.22	2.25	Brown	TDM-250 & TDM-500	10	T-10	1-3/8"
BBLZ-252-NT		1/4"	.50	.75	.13	1.22	2.25					
BBLZ-2S-NT		5/16"	.50	.75	.13	1.22	2.25					
BBLZ-153-NT	1 AWG	#10	.50	.75	.15	1.34	2.38	Green	TDM-250 & TDM-500	11	T-11	1-1/2"
BBLZ-157-NT		1/4"	.50	.75	.15	1.34	2.38					
BBLZ-1/0S6-NT	1/0 AWG	#10	.62	.75	.14	1.34	2.44	Pink	TDM-250 & TDM-500	12	T-12	1-1/2"
BBLZ-1/0S4-NT		1/4"	.62	.75	.14	1.34	2.44					
BBLZ-1/0S-NT		5/16"	.62	.75	.14	1.34	2.44					
BBLZ-1/0S2-NT		3/8"	.62	.81	.14	1.25	2.38					
BBLZ-2/0S5-NT	2/0 AWG	#10	.62	.75	.16	1.50	2.56	Black	TDM-250 & TDM-500	13	T-13	1-5/8"
BBLZ-2/0S6-NT		1/4"	.62	.75	.16	1.50	2.56					
BBLZ-2/0S3-NT		5/16"	.62	.75	.16	1.50	2.56					
BBLZ-2/0S-NT		3/8"	.62	.87	.16	1.50	2.72					
BBLZ-3/0S3-NT	3/0 AWG	1/4"	.64	1.25	.17	1.50	3.12	Orange	TDM-250 & TDM-500	14	T-14	1-5/8"
BBLZ-3/0S4-NT		5/16"	.64	1.25	.17	1.50	3.12					
BBLZ-3/0S2-NT		3/8"	.64	1.25	.17	1.50	3.12					
BBLZ-4/0S3-NT	4/0 AWG	5/16"	.71	1.25	.20	1.63	3.31	Purple	TDM-250 & TDM-500	15	T-15	1-1/4"
BBLZ-4/0S4-NT		3/8"	.71	1.25	.20	1.63	3.31					
BBLZ-4/0S-NT		1/2"	.71	1.25	.20	1.63	3.31					
BBLZ-025S2-NT	250 kcmil	5/16"	.77	1.25	.21	1.63	3.38	Yellow	TDM-250 & TDM-500	16	T-16	1-3/4"
BBLZ-025S5-NT		3/8"	.77	1.25	.21	1.63	3.38					
BBLZ-025S-NT		1/2"	.77	1.25	.21	1.63	3.38					
BBLZ-030S1-NT	300 kcmil	3/8"	.83	1.25	.22	2.00	3.81	White	TDM-500	17	T-17	2-1/8"
BBLZ-030S-NT		1/2"	.83	1.25	.22	2.00	3.81					
BBLZ-035S1-NT	350 kcmil	3/8"	.88	1.25	.25	2.00	3.84	Red	TDM-500	18	T-18	2-1/8"
BBLZ-035S-NT		1/2"	.88	1.25	.25	2.00	3.84					
BBLZ-040S2-NT	400 kcmil	3/8"	.96	1.25	.27	2.13	4.06	Blue	TDM-500	19	T-19	2-1/4"
BBLZ-040S1-NT		1/2"	.96	1.25	.27	2.13	4.06					
BBLZ-050S3-NT	500 kcmil	3/8"	1.06	1.25	.30	2.25	4.25	Brown	TDM-500	20	T-20	2-3/8"
BBLZ-050S2-NT		1/2"	1.06	1.25	.30	2.25	4.25					
BBLZ-060S3-NT	600 kcmil	3/8"	1.19	1.50	.39	2.69	5.09	Green		22	T-22	2-13/16"
BBLZ-060S2-NT		1/2"	1.19	1.50	.39	2.69	5.09					
BBLZ-065S2-NT	650 kcmil	3/8"	1.23	1.75	.40	2.81	5.41	Pink		300	T-300	2-15/16"
BBLZ-065S-NT		1/2"	1.23	1.75	.40	2.81	5.41					
BBLZ-075S3-NT	750 kcmil	3/8"	1.30	1.75	.40	2.88	5.56	Black		24	T-24	3"
BBLZ-075S2-NT		1/2"	1.30	1.75	.40	2.88	5.56					
BBLZ-075S-NT		5/8"	1.30	1.75	.40	2.88	5.56					
BBLZ-100S3-NT	1000 kcmil	3/8"	1.50	1.75	.48	3.00	5.88	White		27	T-27P	3-1/8"
BBLZ-100S1-NT		1/2"	1.50	1.75	.48	3.00	5.88					
BBLZ-100S-NT		5/8"	1.50	1.75	.48	3.00	5.88					

• For 45° or 90° BENT TONGUES add suffix "-45" for 45 deg. or "-90" for 90 deg. to the catalog number

- Connectors from 8 AWG - 2000 kcmil are UL listed per UL486A-B and CSA certified per C22.2 No.65 for POWER applications
- Connectors from 8 AWG - 500 kcmil are UL listed for grounding, bonding and direct burial applications per UL467
- Connectors from 8 AWG - 250 kcmil are CSA certified for grounding, bonding and direct burial applications per C22.2 No.41